

# Poly Fiber Background Trees

By: John Grosner





- Materials needed: poly fiber, coarse turf, spray paint, poly gloves, paper plates, newspaper



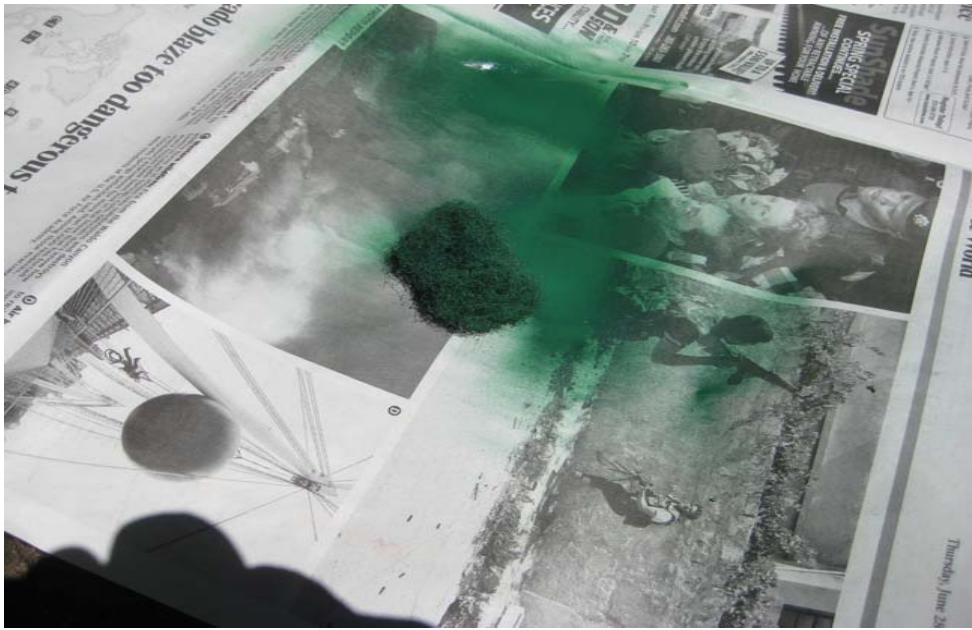


- Thrifty usage of the poly fiber



- Plate with coarse turf ready to apply





- Thoroughly spray both sides of the poly fiber



- Roll the painted poly fiber in the coarse turf





- Continue rolling until good coverage is attained



- Place on newspaper to dry for a couple of hours



# Elmer Glue Method



- Basically the same
- Longer to dry
- Stiffness when dry







# Ready to use after drying





- Before



- After



# Other Scenes



# More







The End